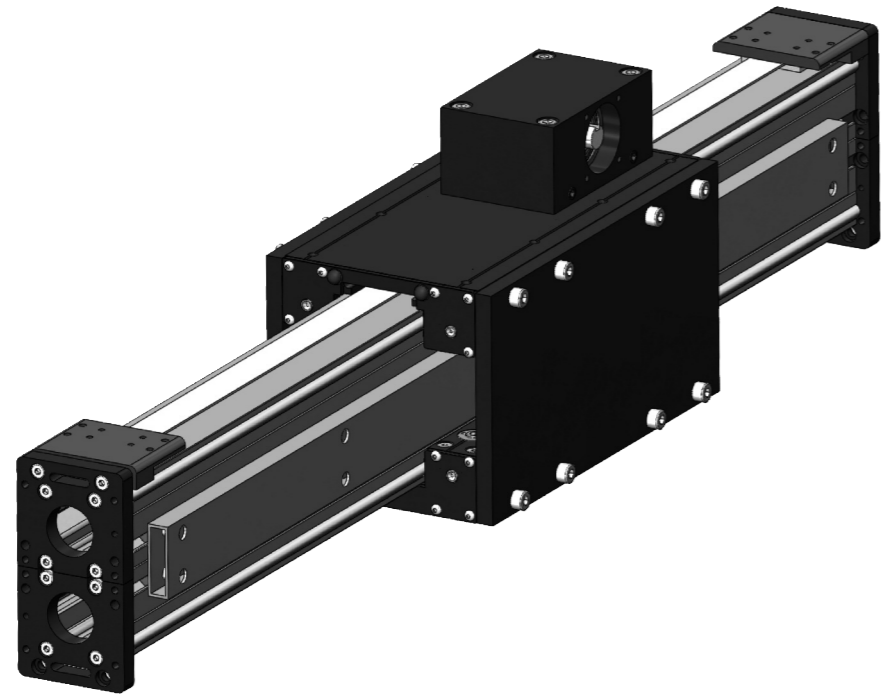
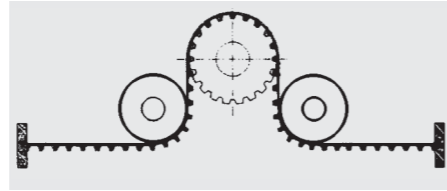
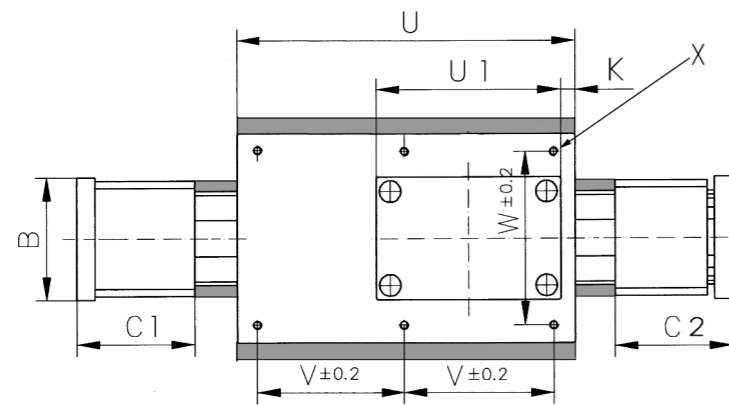
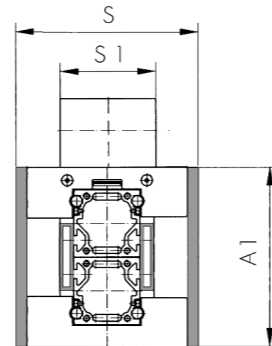
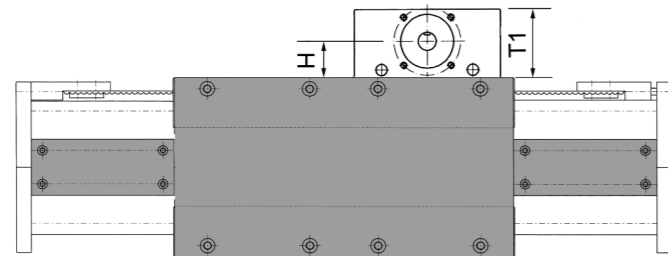


# Typ MZSO 60/90

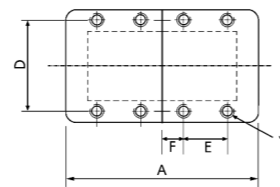
Doppelachse mit Zahnriemenantrieb am Schlitten  
with beltdrive at carriage/axe vertical avec guidage  
supplémentaire/con puleggia dentata in  
corrispondenza della slitta



$$L = C1 + C2 + U + \text{Hub/stroke/course/corsa} + 10 \text{ mm}$$



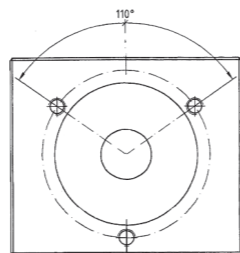
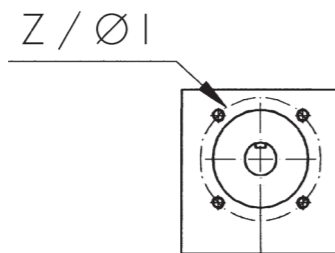
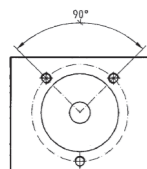
Endplatte/final plate/  
plaque de butée/piastra terminale



MZS 040

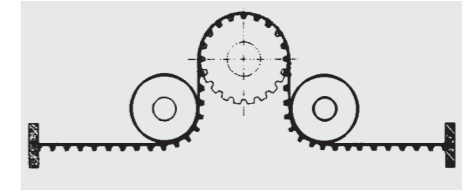
MZS 040.1/060

MZS 060.1/090



# Typ MZSO 60/90

Doppelachse mit Zahnriemenantrieb am Schlitten  
with beltdrive at carriage/axe vertical avec guidage  
supplémentaire/con puleggia dentata in  
corrispondenza della slitta



Linearachse/axis /axe/asse lineare

Typ	Profil	A x B x C1	C2	D	E/F	Y	A1
MZSO 060.	60 x 120	152 x 80 x 78	88	67	52/5	8 x M6	160
MZSO 090.	90 x 140	182 x 120 x 81	91	103	65/15	8 x M10	190

Antriebsblock/drive block/bloc de commande/blocco motore

Version .0				Version .1: Zugkraft erhöht/belt reinforced/courroie renforcée/cinghia rinforzata			
Typ	S1 x T1 x U1	H	K	Typ	S1 x T1 x U1	H	K
MZSO 060.0	85 x 60 x 130	32	12,5	MZSO 060.1	125 x 100 x 148	55	5
MZSO 090.0	125 x 100 x 148	55	12,5	MZSO 090.1	125 x 100 x 248	55	12,5

Schlitten/carriage/chariot/slitta

Typ	U	Rollen bearings galets	S x A1	V	W	X	Gewicht/weight/poids/peso (kg)			
							Block bloc	Block bloc	Schlitten chariot	Profil/m profile/m
							Version.o	Version .1		
MZSO 060	300	6	169 x 160	90 (3x)	115	M8 x 12	2,3	5,9	8,2	8,0
	500	8		117,5 (4x)					12	
MZSO 090	400	6	239 x 190	90 (4x)	185	M8 x 20	6,4	15,5	19,5	16,2
	500			117,5 (4x)					24	

Bestellbeispiel:

example of ordering:

exemple de commande:

esempio di ordinazione

MZSO 060.300.1000.1  
Typ MZSO  
Profilquerschnitt = 60/120 mm  
Schlittenlänge U = 300 mm  
Gesamtlänge L = 1000 mm  
Version mit erhöhter  
Zugkraft = 1

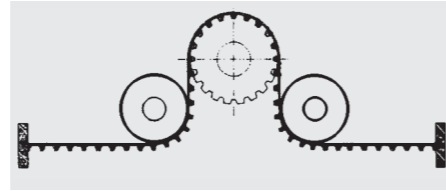
MZSO 060.300.1000.1  
type MZSO  
section of profil = 60/120 mm  
length of carriage U = 300 mm  
total length L = 1000 mm  
version with  
reinforced belt = 1

MZSO 060.300.1000.1  
type MZSO  
section du profil = 60/120 mm  
longueur du chariot U = 300 mm  
longueur totale L = 1000 mm  
version avec courroie  
renforcée = 1

MZSO 060.300.1000.1  
tipo MZSO  
sezione profilo = 60/120 mm  
lunghezza slitta U = 300 mm  
lunghezza asse L = 1000 mm  
versione con cinghia  
rinforzata = 1

# Typ MZSO 60/90

Doppelachse mit Zahnriemenantrieb am Schlitten  
with belt drive at carriage/axe vertical avec guidage  
supplémentaire/con puleggia dentata in  
corrispondenza della slitta

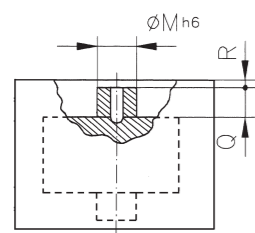
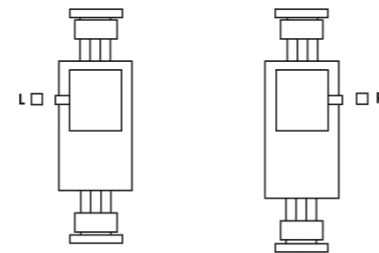


Linearachse	Umfang Riemen-scheibe mm	Durchmesser Riemen-scheibe mm	Leerlauf-moment Nm	Geschwindig-keit m/s bei 1000/min	max. Antriebs-moment Nm	Riemenbreite mm	Teilung mm	Zugkraft Fx (max)
Axis	periphery pully mm	dia pully mm	basic resi-stance Nm	speed m/s at 1000/min	max torque Nm	width of belt mm	pitch mm	traction load Fx (max)
Axe	perimètre poulie mm	diamètre poulie mm	couple résistant Nm	vélocité m/s à 1000/min	couple maximum Nm	largeur courroie mm	pas courroie mm	traction Fx (max)
MZSO 060	130	41,4	0,6	2,17	17	25	5	1150
MZSO 060.1	200	63,6	0,9	3,33	60	50	10	2300
MZSO 090	200	63,6	0,9	3,33	60	50	10	2300
MZSO 090.1	200	63,6	1,2	3,33	150	50	10	5200

## Anschluß für Antrieb/connection for drive/encombrement pour fixation/testata attacco motore

Typ	H	Ø I	Z	Ø K	Standard .o		MZSO .5 verstärkt	
					Ø M	Q x R	Ø M	Q x R*
MZSO 060	45,5	59,4	(4 x) M6 x 12	47	16	9 x 4	24	13 x 11
MZSO 060.1	55	80	(3 x) M8 x 16	68	20	22 x 6*	25	16 x 25
MZSO 090	55	80	(3 x) M8 x 16	68	20	22 x 6*	25	16 x 25
MZSO 090.1	55	80/102	(7 x) M8 x 16	68	20	22 x 6*	25	16 x 25

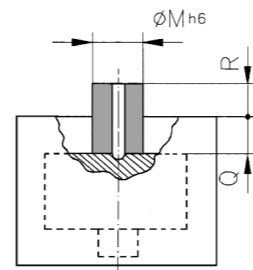
\* nach außen/exterior



Antriebszapfen/connection/arbre

Standard .o

MZS .5 (verstärkt)



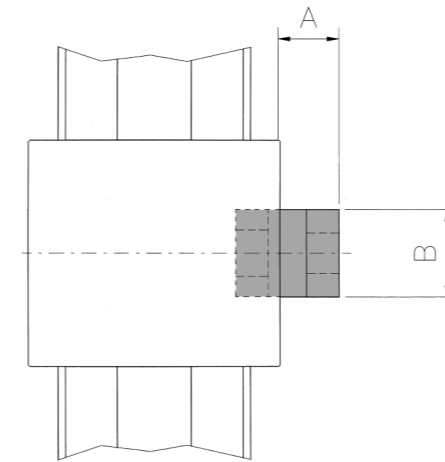
# Zubehör für Typ MZSO

accessories/accessoires/accessori



## Kupplung MKU

coupling/accouplement/giunto

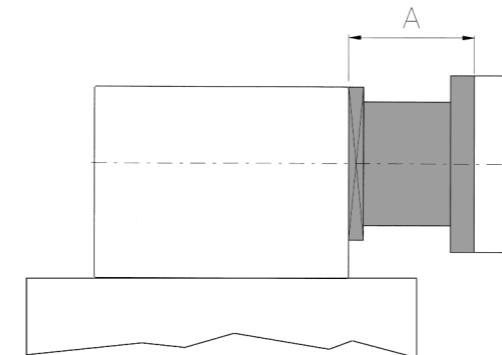


Typ	A	B	M <sub>nenn</sub>
MKU 060	20	30	12,5 Nm
MKU 060.1	53	40	17 Nm
MKU 090	48	40	17 Nm
MKU 090.1	60	55	60 Nm
MKU 120	85	65	160 Nm

Sonderkupplungen  
Special couplings  
Accouplements spéciaux  
Giunti speciali  
S./P. 58

## Antriebsflansch MAF

driving flange/bride d'adaption/flangia per motore



Typ	Getriebe	A/mm
MAF 060	MPG 60	45
MAF 060.1	MPG 60	64
MAF 060.1	MPG 90	78
MAF 090	MPG 90	78
MAF 090.1	MPG 120	115

Inkl. Schrauben für die Achse. Sonderflansche auf Wunsch/  
Including screws for axis. Special flange possible/  
Visserie comprise. Brides spéciales possibles/  
Compresi viti per l'asse. Flangie speciali possibili.

# Typ MSPO 60

Doppelachse mit Zahnriemenantrieb am Schlitten und pneu-matischem Lastausgleich/with belt drive at carriage and pneumatic drive for counter balance/entraînement de la courroie au chariot et vérin pneumatique/con puleggia den-tata in corrispondenza della slitta e azionamento pneumatico

Maße s. MZSO 60, jedoch A = 162, A1 = 170

Dimensions see MZSO 60, but A = 162, A1 = 170

